

Brain Tumor

What is Brain Tumor?

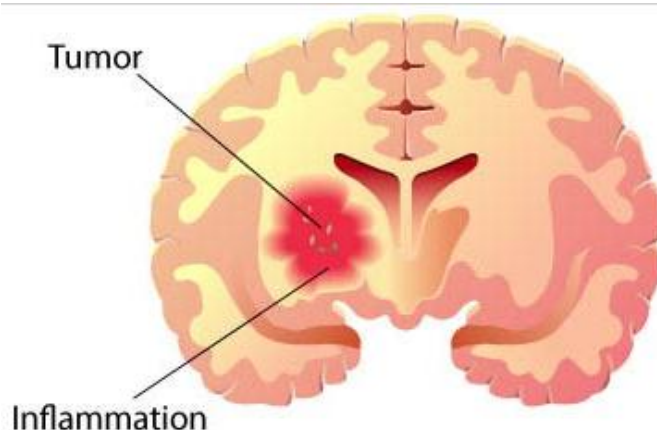
A tumor is a mass or growth of abnormal cells. Tumors found in the brain typically are categorized as primary or secondary. Primary brain tumors originate in the brain and can be non-cancerous (benign) or cancerous (malignant). But they're relatively rare.

These tumors result from cancer that has started elsewhere in the body and spread (metastasized) to the brain.

Benign brain tumors are usually slower growing, easier to remove and less likely to recur than are malignant brain tumors. Malignant brain tumors can grow rapidly, crowding or destroying nearby brain tissue. However, in a small number of cases even benign brain tumors can cause serious problems or be life-threatening.

Signs and symptoms

- New and aggressive headache especially upon waking
- Unexplained nausea or vomiting
- Vision problems such as blurred vision, double vision or loss of peripheral vision
- Gradual loss of sensation or movement in an arm or a leg
- Difficulty with balance
- Speech difficulties
- Drowsiness
- Confusion in everyday matters
- Personality or behavior changes
- Seizures, especially in someone who doesn't have a history of seizures (as with epilepsy. for example)
- Hearing problems
- Hormonal (endocrine) disorders



Physicians generally divide brain tumors into the following categories to explain where or how they originate:

Primary, Primary brain tumors originate in the brain a close to it, such as in the skull, brain membranes (meninges). Cranial nerves, or pituitary or pineal gland. Most brain tumors in children are primary. About 25 percent of brain tumors in adults are primary. It's not known what causes these brain tumors. Studies are being done to determine whether heredity, environmental factors, viruses or other factors play a role in the development.

Secondary, Secondary (metastatic) brain tumors are tumors that result from cancer that starts elsewhere in the body and then spreads (metastasizes) to the brain. Cancers of the lung, colon and breast, along with melanoma a form of skin cancer are most likely to spread to the brain. About 75 percent of brain tumors in adults are metastatic. Sometimes, brain metastases are the first sign of cancer elsewhere in the body.

Benefit of SGS Therapy:

- It Maintains an Ideally required Immune system.
- Effectively clear all lymph nodes which leads to install stronger the lymphatic system.
- It Regulates Body's general metabolism.
- All below combo Supplements Therapy gives the synergetic effects to create anti-tumours & anti Systs
- It translates into usual cell mitosis action as well as cellular metabolism.

Suggested Products:

SGS Detox Formula: 3 gm. Powder in a day

Grolyfe: 7 drops 3 time under the tongue

Comraid: 1 capsule 3 times after meal

Oxizest: 5 drops 3 times under the tongue after meal

SH&WK: **OmegaSat:** 1 soft gel 2 Times after meal

Minerjal: 7 drops 4 times in 200 ml drinking water

Alproxoy: 1 tab 3 times after meal

